

SHAFT LOCKS



SL100B & SL101R
1/4" MODEL



SL110B
KNOB LOCKING MODEL
1/4" MODEL



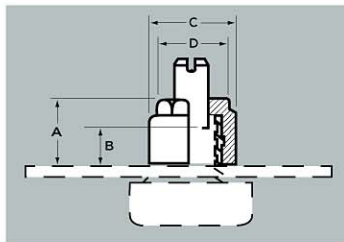
SL105B
1/8" MODEL

EHC Shaft Locks prevent control shafts from rotating under conditions of shock, vibration, or accidental contact. They form a dustproof and water-resistant seal at the shaft and also at the panel surface. One-piece construction, they are simple, effective, and inexpensive.

The Shaft Lock's tapered nylon collar grips the control shaft tightly forming a dust and water-tight seal and exerting an even frictional drag which resists accidental rotation. A molded lip at the outer edge of the base compresses against the panel surface to complete the sealing function of the device. To adjust the control smoothly and accurately, merely insert to screwdriver and turn — no unlocking and relocking required. Tests have demonstrated no significant change in locking torque and water sealing even after 10,000 full on — full off cycles.

Shaft Locks mount directly to the threaded bushings found on most potentiometers and other variable controls. Simply discard the nuts and washers supplied with the control, slip on the Shaft Lock, and tighten with any type of standard 1/2 inch wrench. Once in place, the Shaft Lock need never be loosened — a distinct advantage over conventional two-piece metal split bushing types.

Shaft Locks are available for 1/4 inch and 1/8 inch control shafts. Model SL-110B is designed specifically for use with .90 diameter standard EHC control knobs (see pages 2 through 5). SL-110B fits underneath the .90 diameter knob and is completely out of sight. It is often a replacement for more expensive and complicated locking devices and provides the same high quality performance as the regular models. When mounting SL-110B, it is sometimes advisable to mount the standard mounting nut behind the panel if the control's threaded bushing projects too far.



Part Number

	A Diam. max.	B Height max.	C Diam. max.	D Depth max.
SL-100B	.480	.348	.630	.505
SL-101R	.480	.348	.630	.505
SL-105B	.317	.223	.455	.380
SL-110B	.286	.187	.630	.505

"B" dimension is the maximum thread height above the mounting panel.

FEATURES

- Water and dust seal at shaft and panel
- Resists shock and vibration
- Tested for humidity, water immersion, and temperature shock.
- Passes 10,000 life cycling test
- Control adjustments may be without untightening nut
- One-piece construction
- Mounts with standard tools
- Highest quality materials

MATERIAL AND SPECIFICATION DATA

Nylon — MIL-M-20693

Insert — Brass per QQ-B-626 Nickel plated per QQ-N-290, Class 1, Type V

Shock — 50 g's

Vibration — 5 hours at 10 to 55 cps with amplitude of 0.06"

Water Immersion — 50 hours under 3 ft. head of water. Control shaft rotated every 10 hours.

Temperature Shock — Five cycles of 30 minutes at each extreme, -55°C and +85°C

Humidity — 150 hours at 95% relative humidity 40°C

Life Wear — 10,000 complete cycles

ORDERING GUIDE FOR SHAFT LOCKS

	Series	For Shaft Size	Control Bushing Thread Size	Series
Standard Models	SL-100B	1/4"	3/8 - 32 NEF-2	Black
	SL-101R	1/4"	3/8 - 32 NEF-2	Red
	SL-105B	1/8"	1/4 - 32 NEF-2	Black
Knob Locking Model*	SL-110B	1/4"	3/8 - 32 NEF	Black

*Use with any .90 diameter, or larger, ring or dial skirted round, skirted pointer, or crank knob.

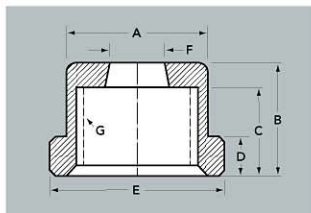
SHAFT LOCKS

SHAFT LOCK ALL PLASTIC



AK-1047
5/16" HEX OD

Material: Nylon



Part Number

	A Diam.	B Height	C Height	D Height	E Diam. max.	F Diam.	G Thread
AK1047-2-4	.288	.230	.180	.078	.355	.113	1/4-32
AK1049-2-4	.437	.257	.197	.120	.505	.113	1/4-32
AK1049-2-6	.437	.257	.197	.120	.505	.113	3/8-32
AK1049-4-6	.437	.257	.197	.120	.505	.240	3/8-32

